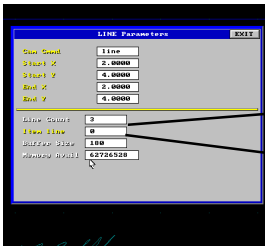
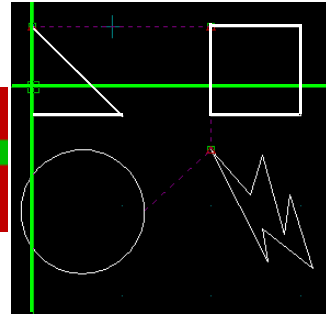


## List/Listfront

The list command will tell you the order of an item in a list the program assembles. This is the move and cut sequence the machine will execute. After clicking the command, the command line asks you to select an object. Once selected with the crosshair, a screen will appear. In this example, the triangle is selected.

ZOOMP  
ERASE  
LIST  
MOUSE  
COPY

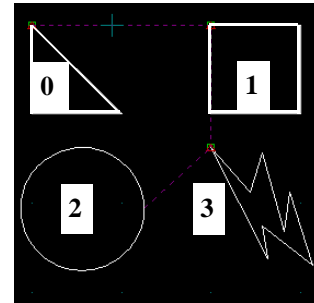


The triangle is item zero. The list begins with zero and builds from there. Read the item line to see the position of

Item line

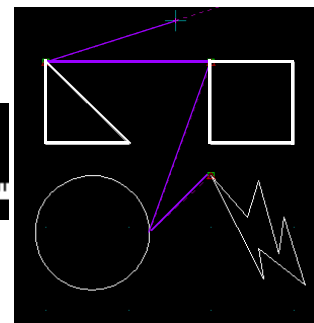
0

the item on the list. In the example on the right, the numbers show the order the items were drawn in and the order the machine will cut them in.

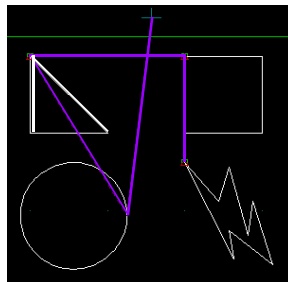


The listfrnt command makes it possible to select an item and place it at the beginning of the list so that it becomes zero. Notice the purple line connecting the objects. From its start position, you can easily see the order the machine will move in. (0) triangle, (1) square (2)circle and (3)bolt.

CHGLNUP  
SWAPEND  
CHGORDER  
LISTFRNT  
JOIN



After selecting the listfrnt command, use the crosshair to select the object you wish to cut first. Immediately after the selection, the cutting order will change. Now, it will be circle, trian-



Item line	0	CIRCLE
Item line	1	TRIANGLE
Item line	2	SQUARE
Item line	3	BOLT