

Text/Font

Selecting the text command causes the command line to ask for the start point of the first word. Select a point on the screen and left click.

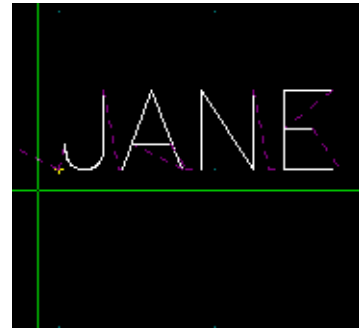


```
Background File is loaded
End of MECH CONFIG S# 994904
Command:text Start Point: , height<0.500>: |
```

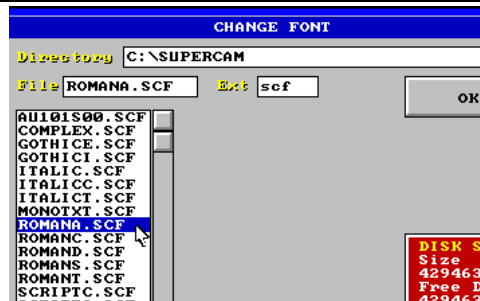
Next, the command line wants to know how tall the letters you want to engrave will be. The setting on the line is now one half inch. Press enter to accept or type in a new value and press enter.

```
End of MECH CONFIG S# 994904
Command:text Start Point: , height<0.500>:
text: JANE|
```

Having selected the height of the text, the command line asks that you type in the word or words you want to engrave. After typing, press enter and the text will appear on the screen. The text will appear above and to the right of the start point. It will be displayed in whatever font style is currently selected.



SuperCam contains fonts you can select for engraving. They create center line tool paths. Selecting the font command will bring up a menu screen. Left click on the font style you want and click the “ok” button.



A new font is selected.
The text is changed from
Romana to Scriptc.

