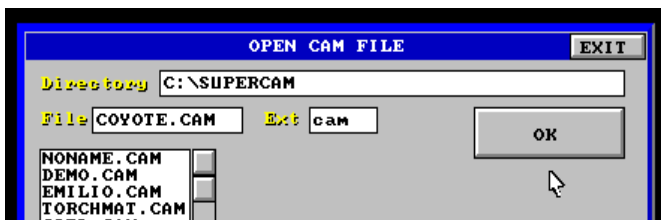
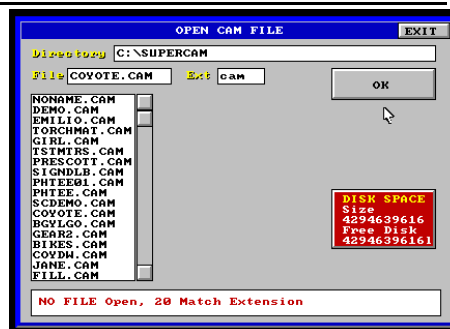


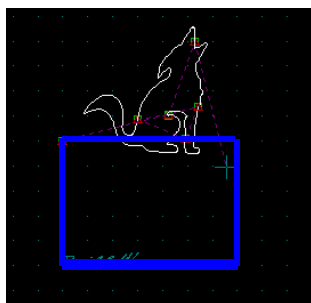
Files/Open/Close



The “open” command presents the .cam file screen. Files with the .cam extension were originated in SuperCam or, were imported files that were modified



The mouse moves the white pointer over the screen. Find the file you want in the scroll menu. Select with the pointer by left clicking. File will appear in the file window. Left click the “ok” button to bring the file



Remember that the contents of a file may exist beyond the view of the mechanical limits. Use the “zoom center” command to see the big picture. (Page 6) The “move” command will bring the object into the limits. (Page 7) and the “scale” command to size the object. (Page 8).



The “close” command will remove the currently displayed file. If the file has been modified, the command line will ask if you want to save the changes.