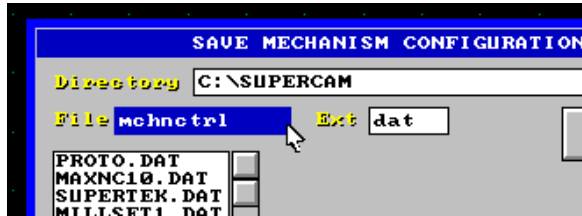


Files/Save mechanical config./Read mechanical config./Background/End/Quit



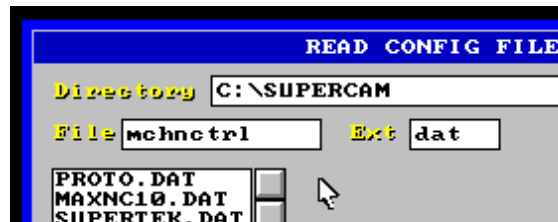
“savemcfg” makes a file of how your mechanism is currently configured.



The files will have a .dat extension. It can be used to build files for speed configurations for different materials, or different machines. Backspace to clear the selected window. Type name for the current machine setup. Press enter, click “ok”.



The “readmcfg” command presents a screen for selecting from the various machine configuration files you have created. The machine will be reconfig-



Scroll and select the setup file you want. Left click on the “ok” button.



The “backgrnd” command enables you to select any file for display as a reference. It is not a part of the drawing you are making. However, you can draw on top of it when making a new file.

To remove the background, bring up the screen again with the command, but select nothing. Left click on the exit button. Press the F1 key to clear the screen.



```
Command:quit  
Command:  
EXIT SuperCam? <N|Y> |
```

The “end” and “quit” commands are the same. Also, pressing the ESCAPE key has the same result.