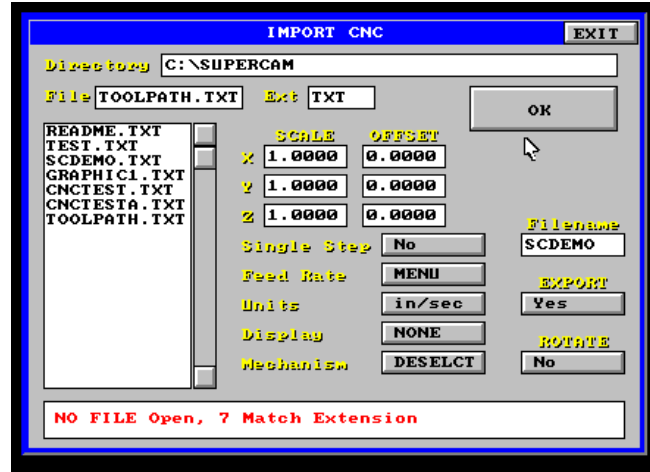


## Importing CNC files/Scale/Offset position/Single stepping



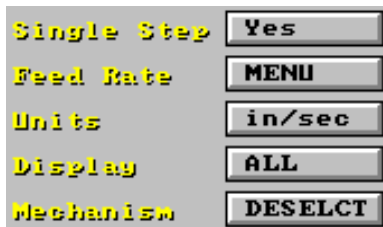
The “inp\_cnc” command will bring in an existing CNC file which will have a .TXT extension. The import cnc screen has setting boxes that determine how the file will be displayed and executed.



The cnc file can be made to cut a larger or smaller pattern by scaling. For example, if the scale values were set at 2.0000 in X,Y, and Z, the part would be twice as large. Should you want to move the cutting position from that in the file, record the offset value away from the existing position in each axis.

	SCALE	OFFSET
X	1.0000	0.0000
Y	1.0000	0.0000
Z	1.0000	0.0000

```
X0.5000 Y0.5625
X2.6250 Y0.5625
X2.6250 Y2.6875
```



Single stepping means only one line of code will be executed at a time. Press the spacebar repeatedly to move from line to line. Table must be deselected to see file displayed. When the display is set to “all”, the coordinates are shown on the command line. The right hand screen shows the line number.

