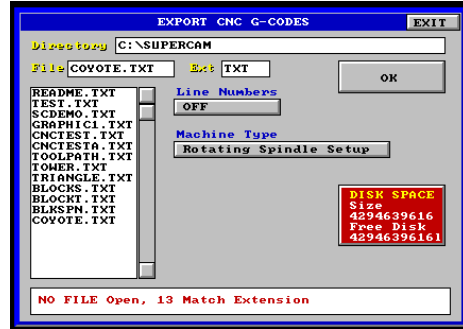


Exporting CNC/Setup CNC/



The “exp_cnc” command is used to create a cnc file. Any file you have displayed on the SuperCam screen resides in the SuperCam sub-directory and can be made into a cnc code file.



Remember that the travel and cut speeds you presently have set up on the configuration screen will be recorded into the cnc file. This may not be important since you will be able to select a configuration when importing the file for cutting using the “menu” button on the import screen. If the file is metric, it will be im-



The “setup_cnc” command brings up the cnc code configure file. You can determine what code you will assign to each function. Click on the “save”



In the lower right corner of the code configure file is a button indicating the machine type. A file can be made for spindle, torch or laser cutting.



On the cnc export screen you will find the same button that can be used to toggle through and set the machine type. The buttons are connected. Changing one changes the other.

(Continued next page)