

## Redraw/Set mechanical limits/Zoom limits

The “REDRAW” command and the F1 key do the same function. They clear the screen of residual path lines and points.



In SuperCam, the word “limits” means the mechanical cutting range of the device you are operating. You must enter the dimensions with the “SETLIMIT” command. We consider 0,0, to be the lower left corner.



Press the “ENTER” key to accept.

```
Limits lower left <0.0000,0.0000>
```

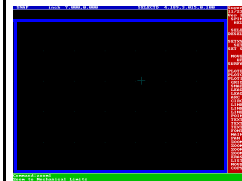
The first value on the command line is length (X axis) and the second is height (Y axis).

```
Upper Right <7.0000,5.0000> : 10.  
Command:setmlmt, Set Mechanizm Li  
Upper Right <10.0000,8.0000> :
```

The old limits are 10 in. by 8 in. This example is to change to 7 in. by 5 in.

```
mlmt, Set Mechanizm Limits lower  
<10.0000,8.0000> : 7.000,5.000
```

Values are typed. Press “ENTER”.



The blue border shows the new limits.

The zoom limits command shows the area of the mechanical limits instantly.

