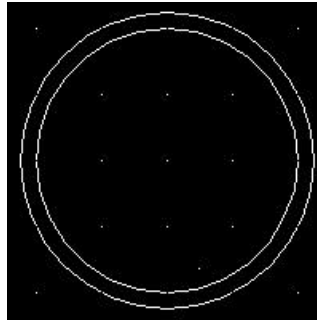


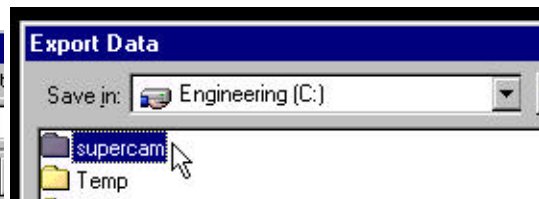
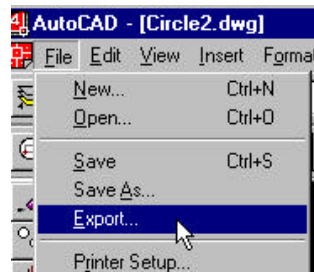
Creating DXF. files in AutoCad

Most users who are importing .dxf files will be making their original drawings in AutoCad.

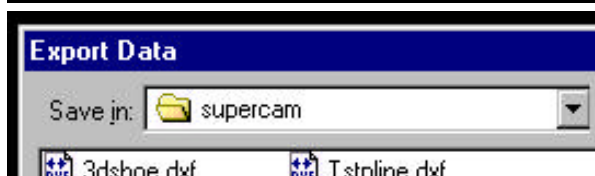


In this example, an offset tool path has been created in AutoCad. The file was saved in AutoCad as CIRCLE2.DWG.

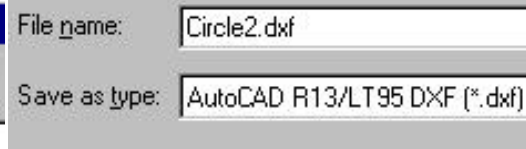
Open the Circle2.dwg file. Then, under file on the AutoCad screen, select “Export”.



Select the directory SupeCam resides in. Select SuperCam. Click “Open”.



The file will be exported to the SuperCam sub-directory.



At the bottom of the export data screen is a scroll down menu. Select the AutoCad R13. Click “save”.

The file is exported



The dxf. file just created is ready to be viewed on the SuperCam screen by using the “imp_dxf” command.
