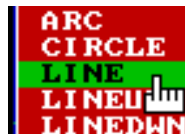


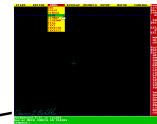
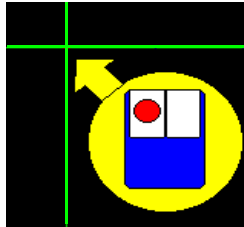
Drawing lines/

You can select the line command from either the pull down draw menu, or the quick select menu.



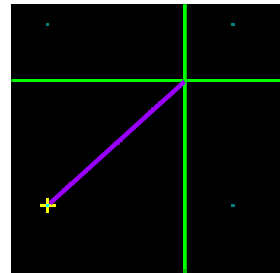
Command:line, LINE Start:

Move the mouse to direct the crosshair to the point where you want the line to start. Left click on the point.

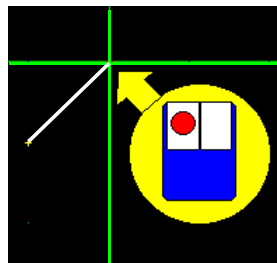


Command:line, LINE Start: 4.0000,4.0000
End:

As you move the mouse away from the start point, a purple line will connect the mouse and the start point.



Left click where you want the line to end.



Command:line, LINE Start: 4.0000,4.0000
End: 5.0000,5.0000
Next End: